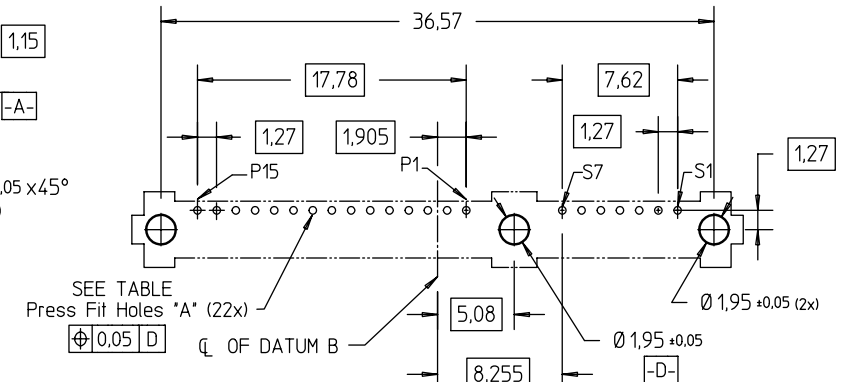
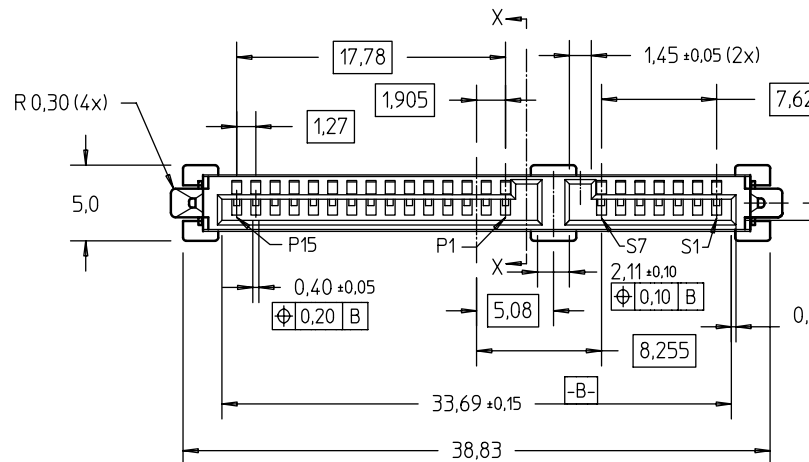


FCI CONFIDENTIAL

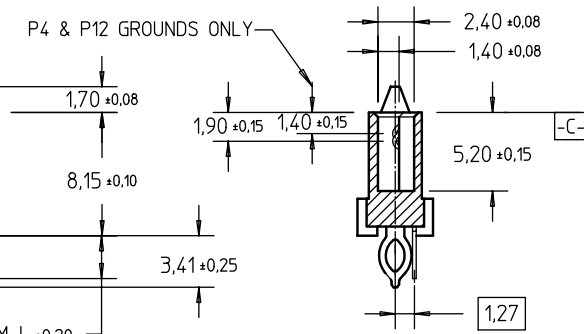
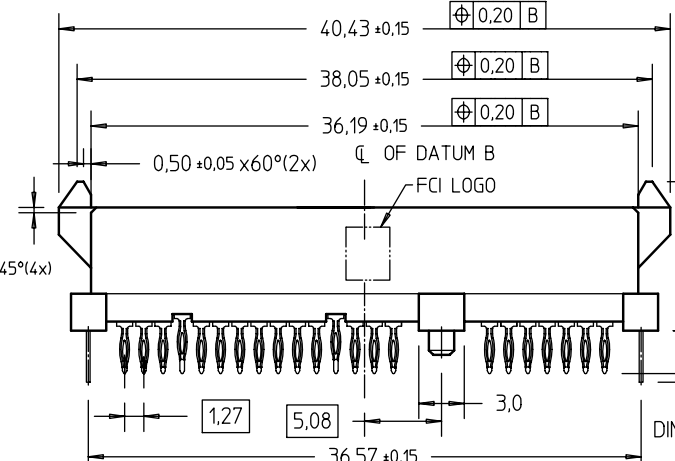
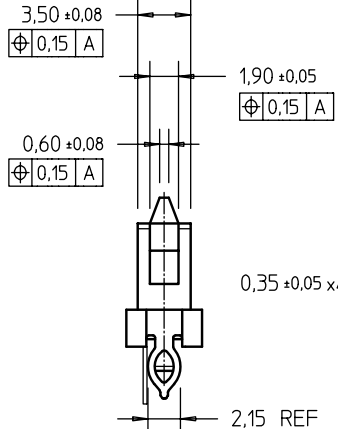


This document is the property of and embodies CONFIDENTIAL and PROPRIETARY information of FCI. No part of the information shown on this document may be used in any way or disclosed to others without the written consent of FCI. Copyright FCI.

| | | | | |
|----------------|-------|-----------------------------------|-----------------------------|----------------|
| PRODUCT NO | DIM L | RECOMMENDED P.C. BOARD THICKNESS | Hole | A |
| 10022676-001LF | 2.70 | 1,57mm (0,062") / 2,36mm (0,093") | Hole Diameter after plating | 0,45 - 0,55 mm |
| | | | Drilled hole | 0,58 - 0,62 mm |
| | | | Copper plating | 25 - 50 um |
| | | | Sn Plating | 5 - 15 um |



RECOMMENDED P.C.B. LAYOUT



SECT X-X

NOTES:

- MATERIAL:
 - HOUSING : HIGH TEMP. THERMOPLASTIC, UL 94V-0
COLOR : BLACK
 - TERMINAL : COPPER ALLOY
 - HOLD DOWN : COPPER ALLOY
- FINISH :
 - TERMINAL : 30u" Au PLATING (CONTACT POINT) OVER 50u" MIN NICKEL
 - SOLDER TAIL : 20u" MIN - 60u" MAX TIN OVER 50u" MIN NICKEL
 - HOLD DOWN : 50u" MIN TIN OVER 50u" MIN NICKEL
- TRUE POSITION NOTES APPLY AT TERMINAL TIP

4 PER S-ATA SPEC REV 1.0a

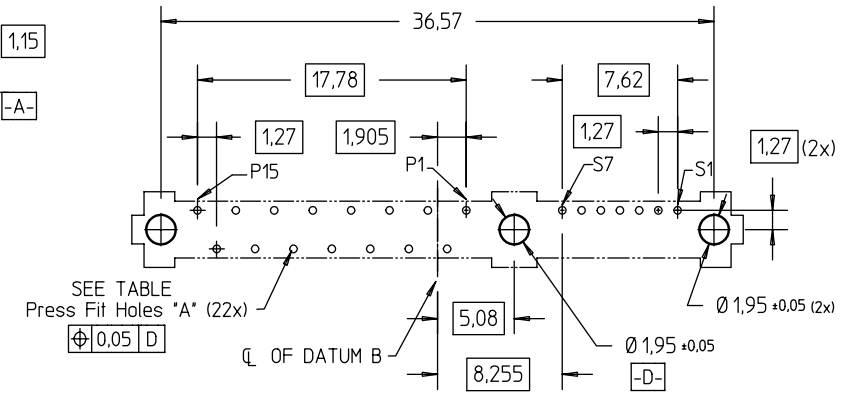
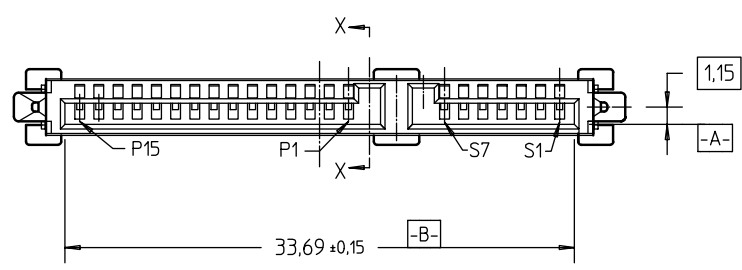
| | | | | | |
|-------------|----------------|----------|------------------|-----------------------|----------------|
| mat'l code | | surface | tolerance | projection | product family |
| | | ISO 1302 | ISO 406 ISO 1101 | | S-ATA |
| ltr | ecn no | dr | date | title | |
| A | S04-0131 | GLL | 2004-10-05 | S-ATA COMB RECEPTOR | |
| B | S05-0035 | GLL | 2005-02-07 | VERTICAL PF TYPE ASSY | |
| C | S06-0312 | GLL | 2006-09-19 | scale 2:1 | |
| | | dr | GL L00 | 2004-10-05 | dwg no |
| | | enrg | GL L00 | 2004-10-05 | sheet 1 of 2 |
| | | chr | GL L00 | 2006-09-19 | size |
| | | appd | JOEY NG | 2006-09-19 | A4 |
| sheet index | revision sheet | C | C | type CUSTOMER Drawing | |
| | 1 | 1 | 2 | | |

FCI CONFIDENTIAL

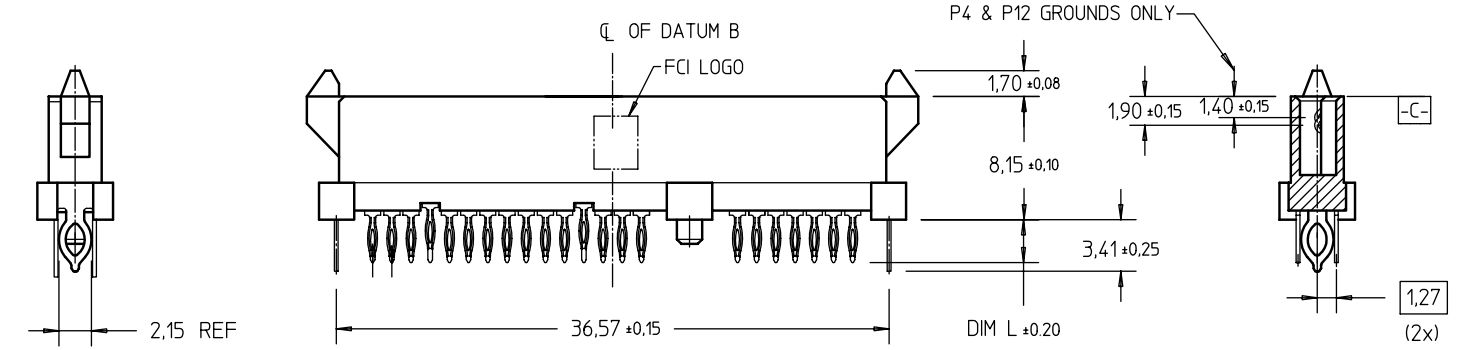


This document is the property of and embodies CONFIDENTIAL and PROPRIETARY information of FCI. No part of the information shown on this document may be used in any way or disclosed to others without the written consent of FCI. Copyright FCI.

| | | |
|----------------|-------|-----------------------------------|
| PRODUCT NO | DIM L | RECOMMENDED P.C. BOARD THICKNESS |
| 10022676-002LF | 2.70 | 1,57mm (0,062") / 2,36mm (0,093") |



RECOMMENDED P.C.B. LAYOUT



NOTES:
ALL OTHER DIMENSIONS, REFER TO SHEET 1.

- NOTES :
- 5 THE STD PACKAGING IS IN TRAY.
 - 6 THE HOUSING WILL WITHSTAND EXPOSURE TO 260°C PEAK TEMPERATURE FOR 10 SECONDS IN A CONVECTION, INFRA-RED OR VAPOR PHASE REFLOW OVEN.
 - 7 THIS PRODUCT MEETS EUROPEAN UNION DIRECTIVES AND OTHER COUNTRY REGULATIONS AS DESCRIBED IN GS-22-008.
 - 8 PART NUMBERS ENDING IN "LF" MEANS FOR NOTE 7 LEAD FREE IDENTIFICATION. P/N XXXXXXXX-XXXLF IS EQUIVALENT TO PREVIOUS P/N XXXXXXXX-XXX

| | | | | | |
|-------------|----------------|------------|------------------|---|----------------|
| mat'l. code | | surface | tolerance | projection | product family |
| | | ISO 1302 | ISO 406 ISO 1101 | | S-ATA |
| ltr | ecn no | dr | date | title | |
| | | | | S-ATA COMB RECP. VERTICAL PF TYPE ASSY | |
| angles | | linear | | mm | scale 2 : 1 |
| ± 2° | | | | | |
| dr | GL L00 | 2004-10-05 | | | |
| enrg | GL L00 | 2004-10-05 | | | |
| chr | GL L00 | 2006-09-19 | | | |
| appd | JOEY NG | 2006-09-19 | | | |
| sheet index | revision sheet | 1 | | | |
| | | | | dwg no 10022676 sheet 2 of 2 size A4 | |
| | | | | type CUSTOMER Drawing | |